



 Gökova SEPA

## THE PROJECT AREA

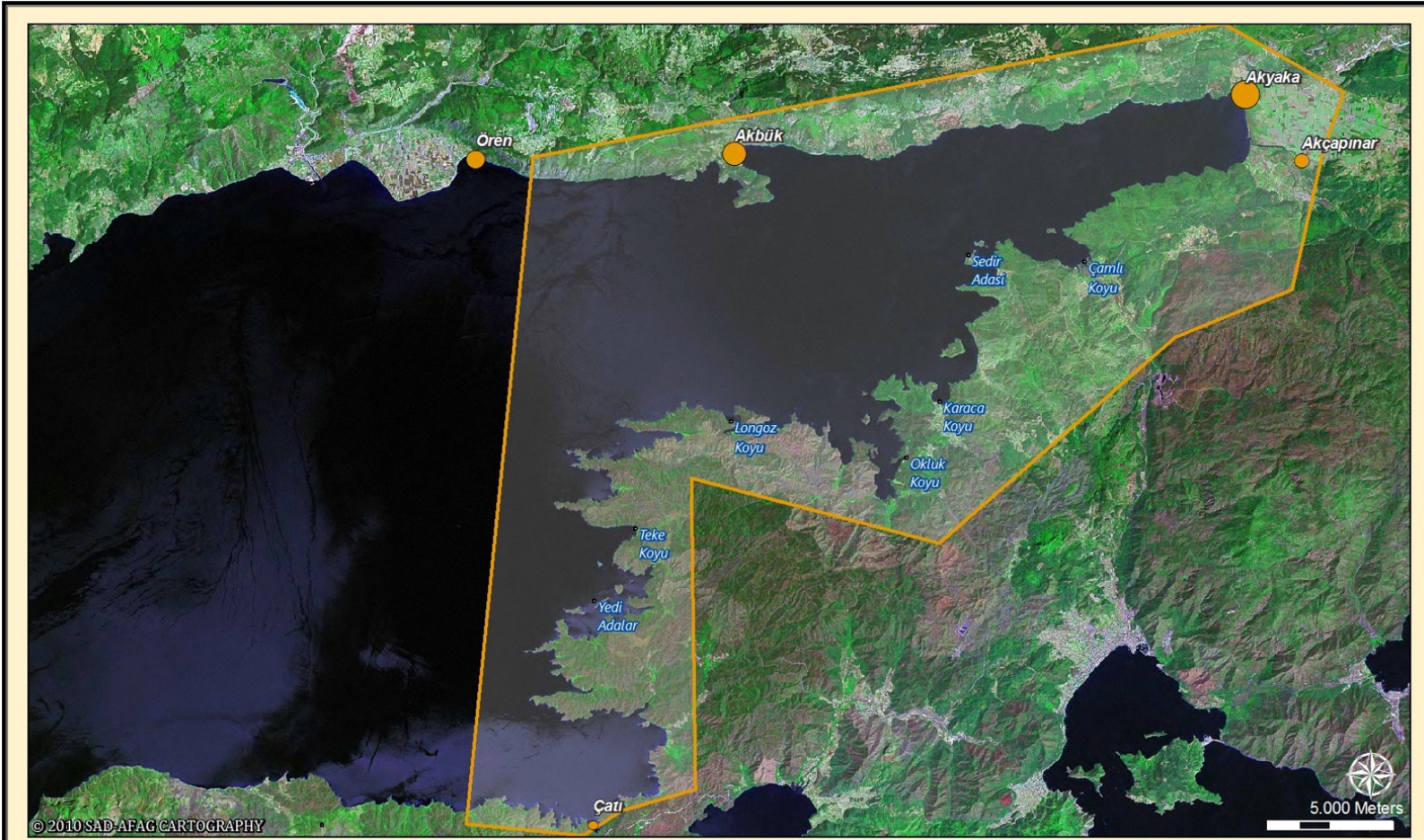
GÖKOVA SEPA INTEGRATED COASTAL & MARINE MANAGEMENT PLANNING PROJECT











#### Total Length of the Net

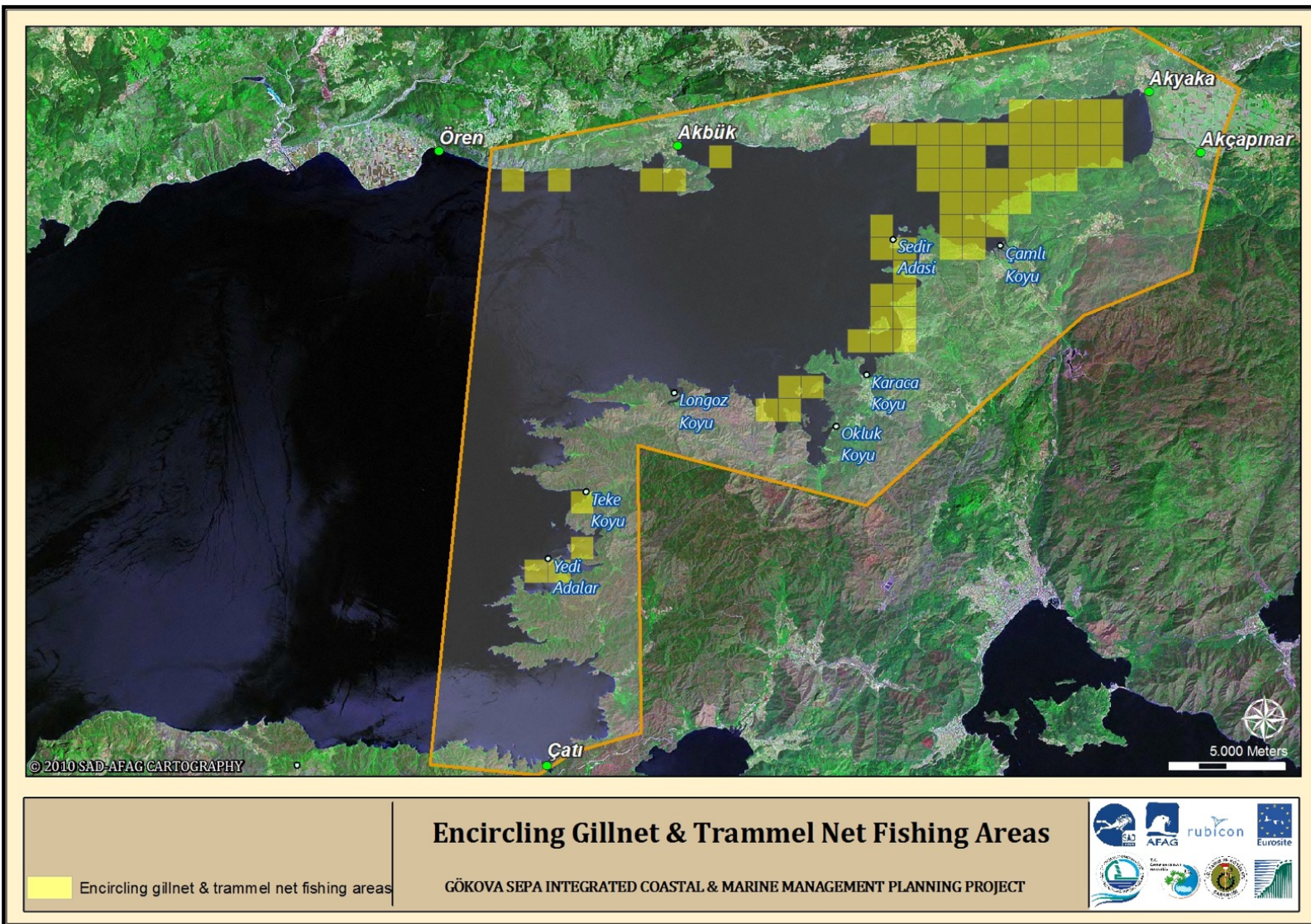
- |                  |               |
|------------------|---------------|
| ● 398, Çatı      | ● 568, Akbük  |
| ● 427, Akçapınar | ● 804, Akyaka |
| ● 433, Ören      |               |

## TOTAL LENGHT of THE NET

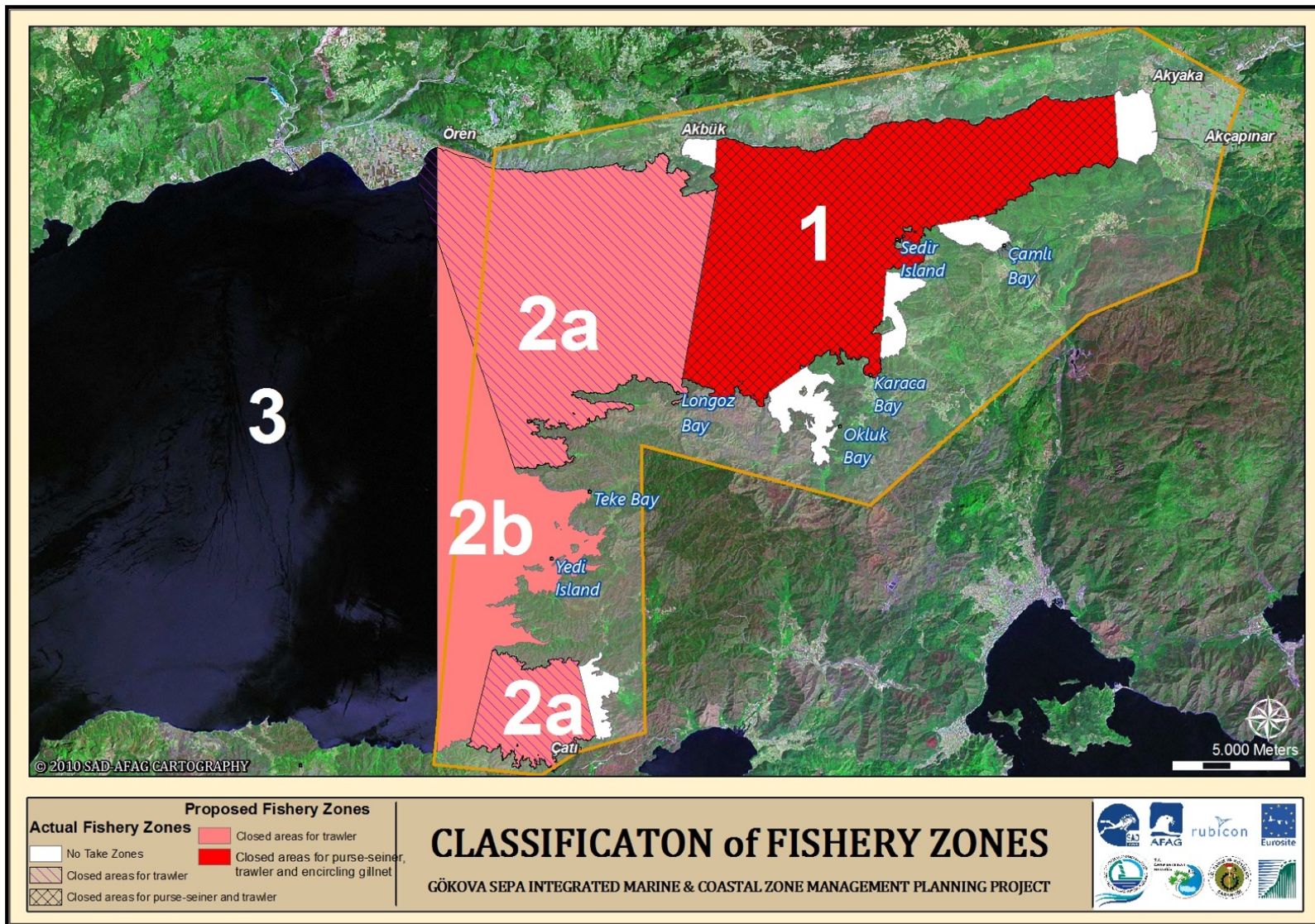
GÖKOVA SEPA INTEGRATED MARINE & COASTAL ZONE MANAGEMENT PLANNING PROJECT



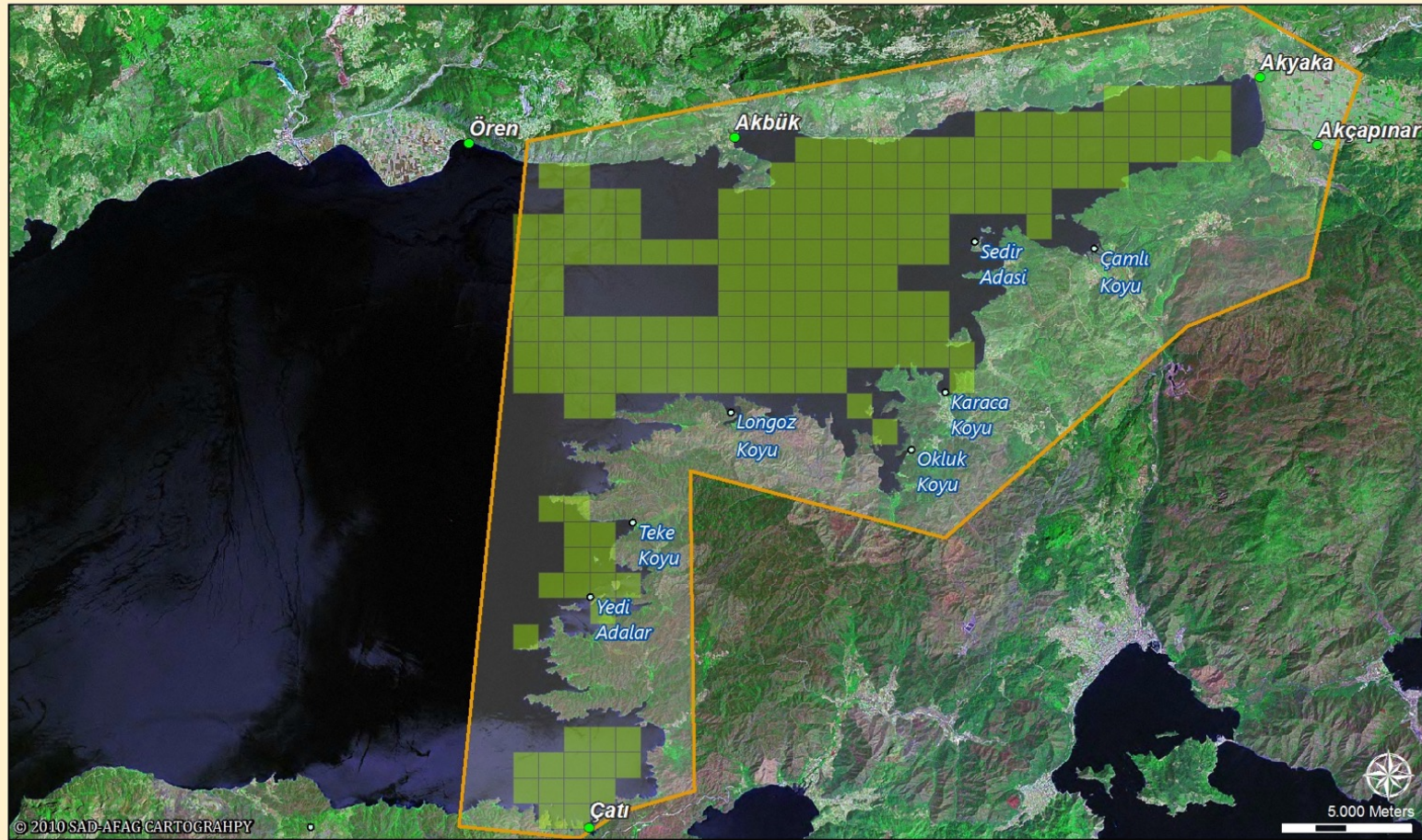






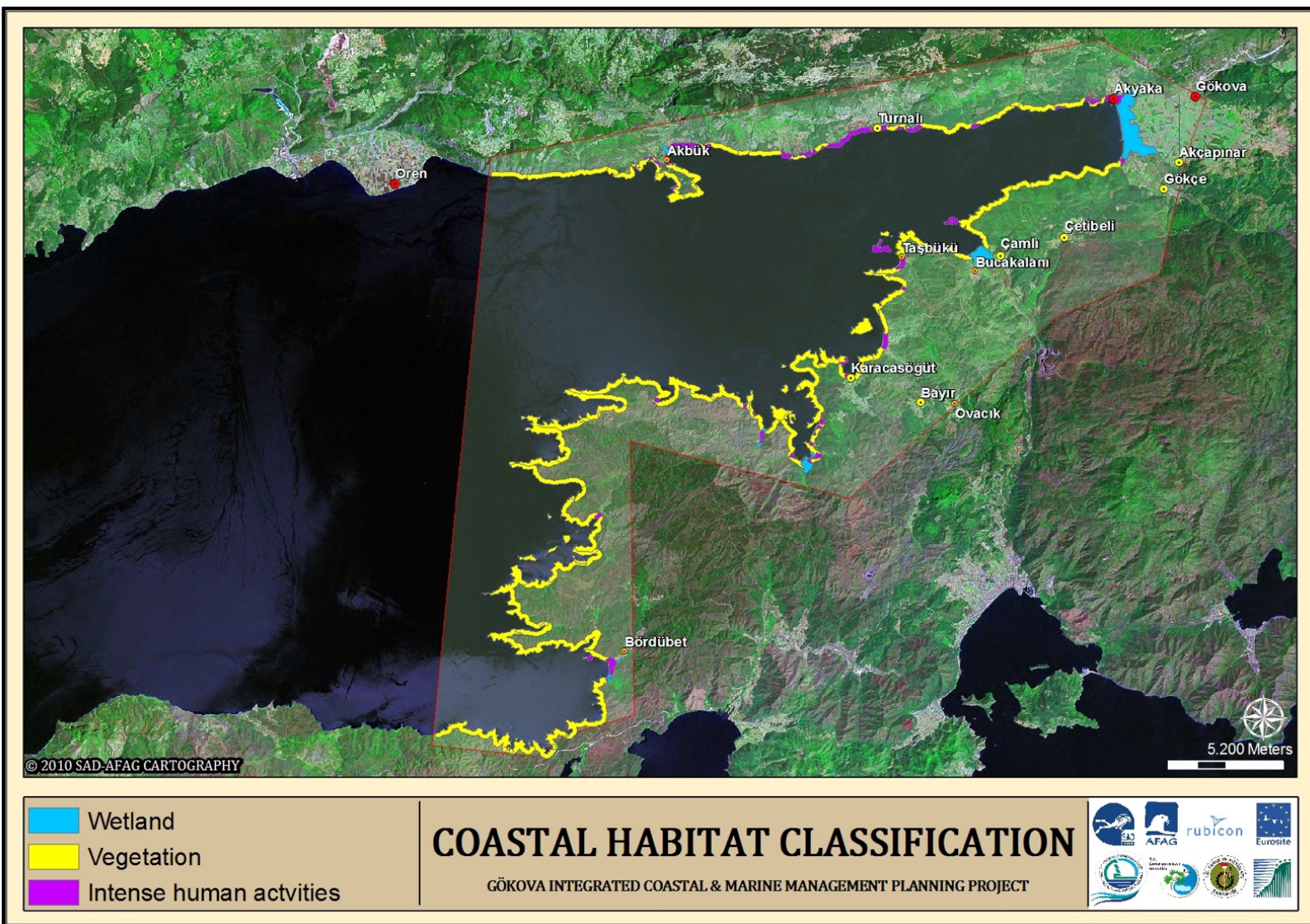




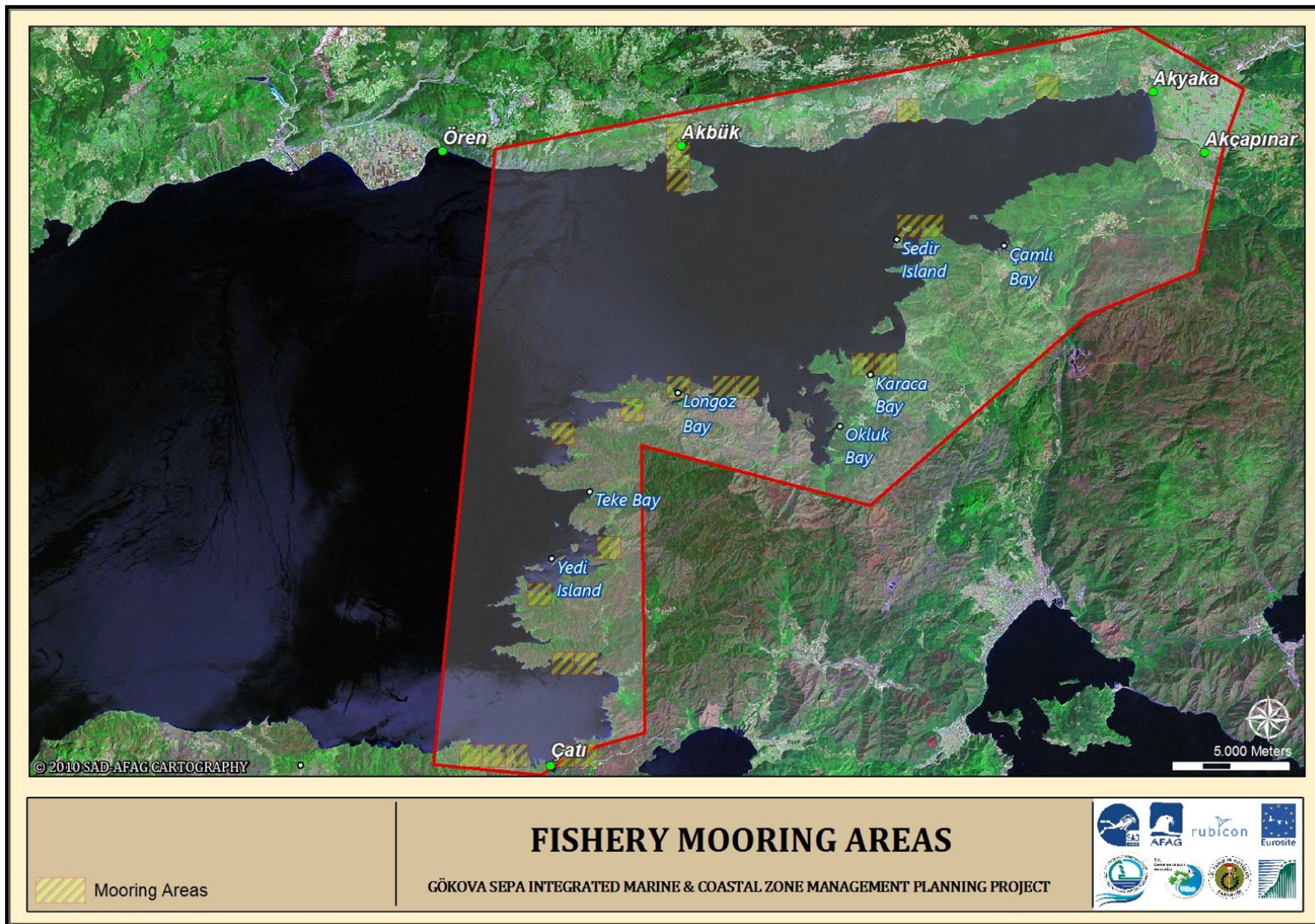


<p>Trammel and gill net fishing areas</p>	<h2 style="text-align: center;">TRAMMEL &amp; GILL NET FISHING AREAS</h2> <p style="text-align: center;">GÖKOVA SEPA INTEGRATED COASTAL &amp; MARINE MANAGEMENT PLANNING PROJECT</p>	
---	--	--

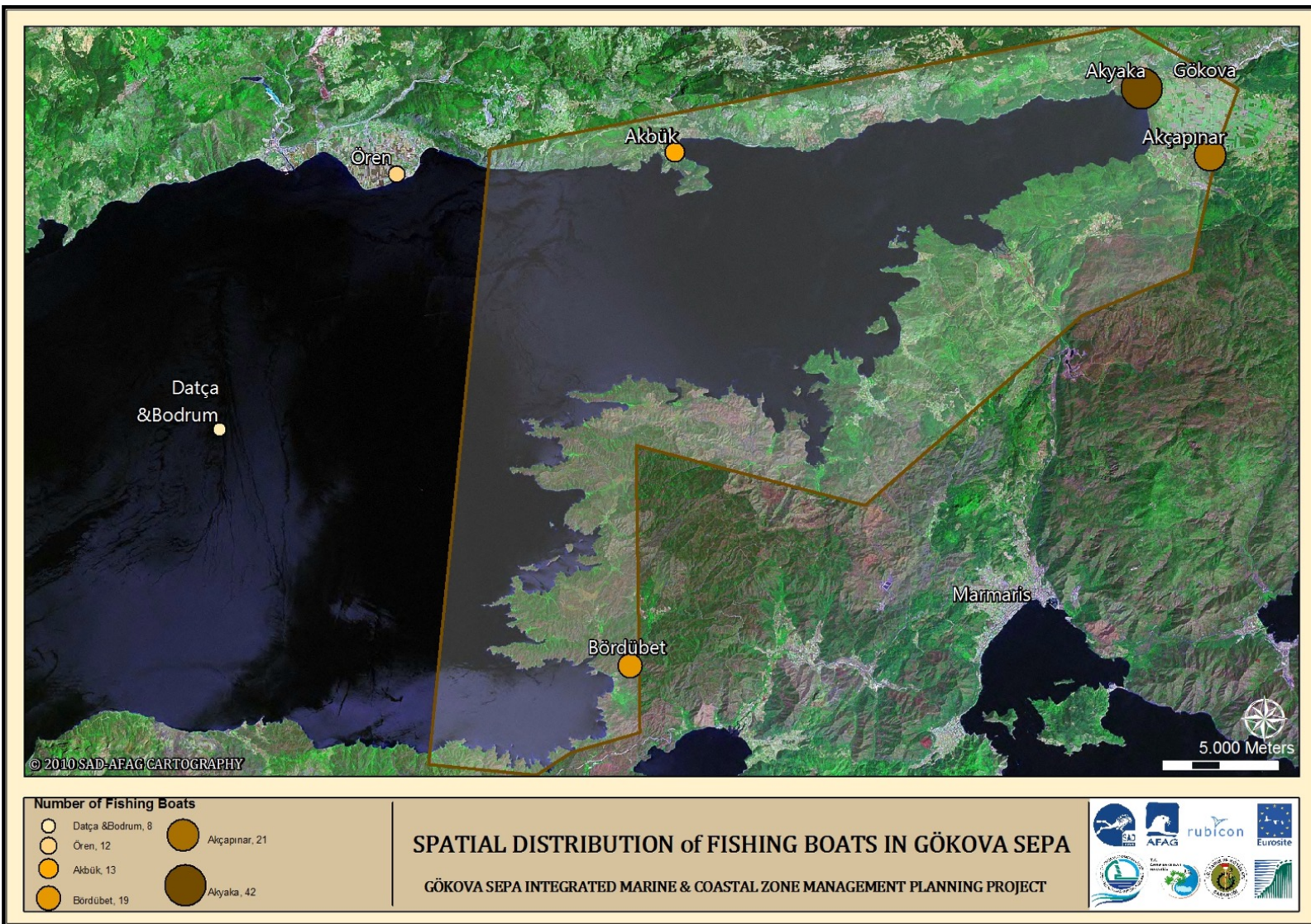




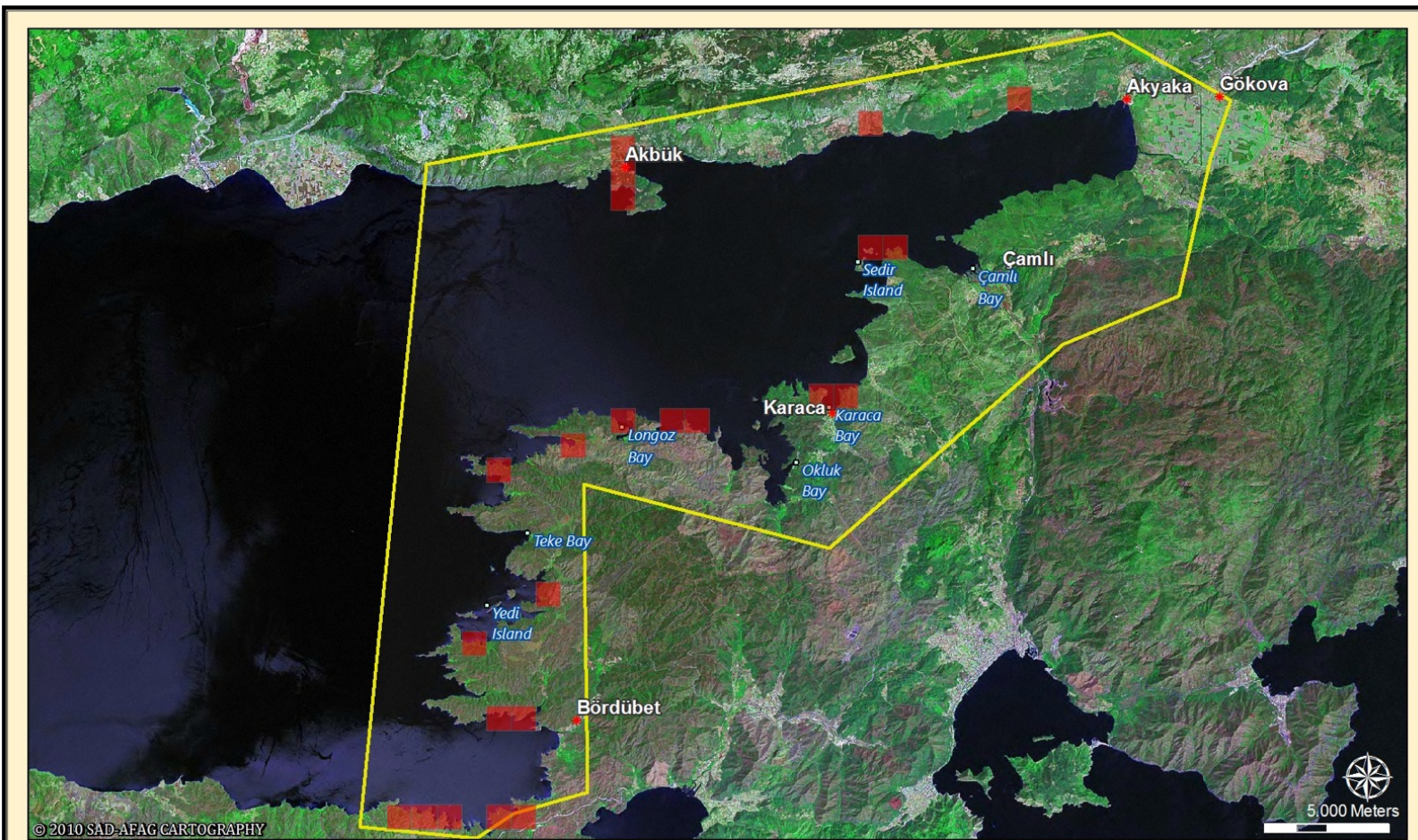












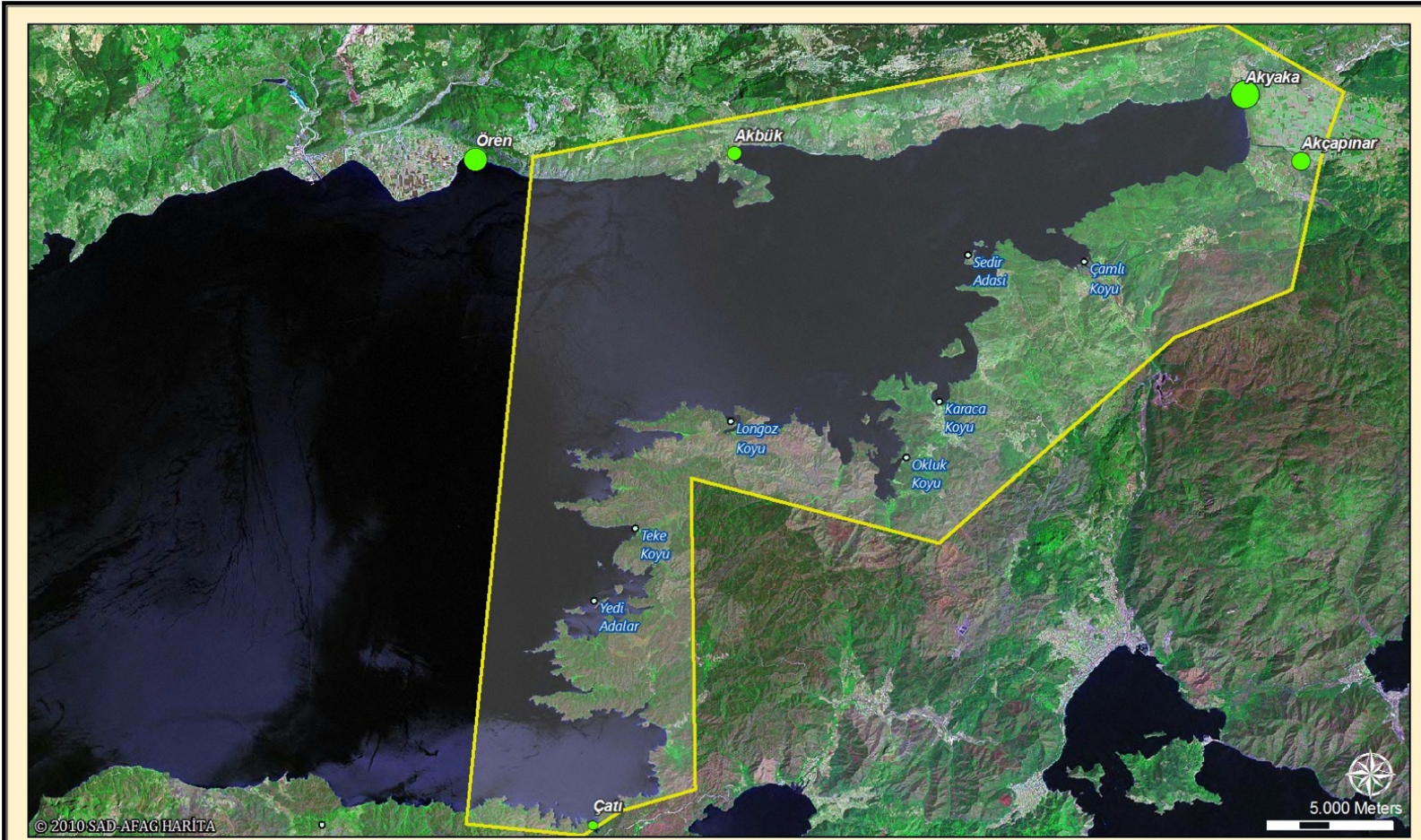
Mooring Areas for Fishery Boats

## MOORING AREAS FOR FISHERY BOATS

GÖKOVA SEPA INTEGRATED MARINE & COASTAL ZONE MANAGEMENT PLANNING PROJECT







#### Total number of hooks

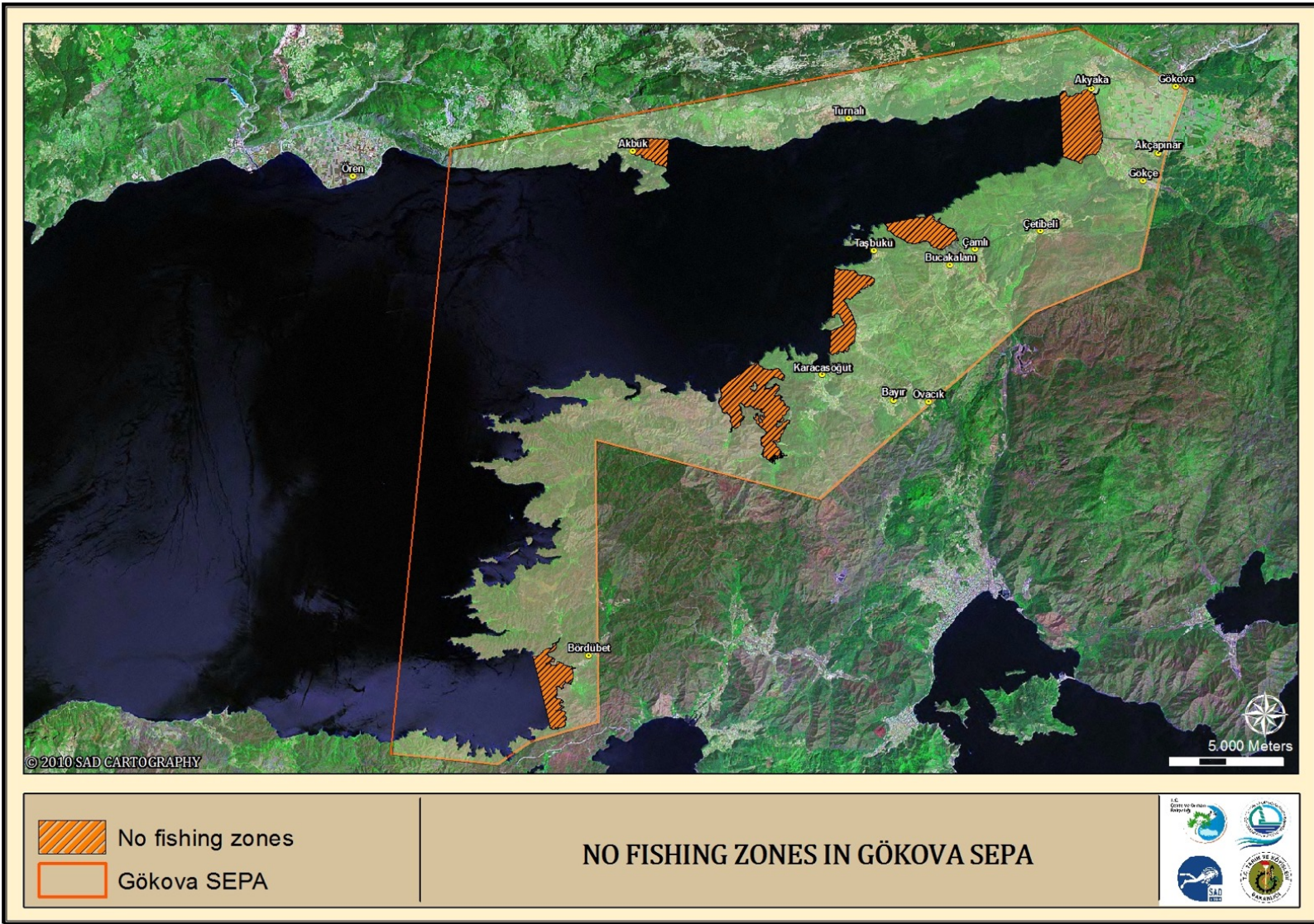
● 8230, Çatı	● 23120, Ören
● 13600, Akbük	● 44550, Akyaka
● 16500, Akçapınar	

## TOTAL NUMBER OF HOOKS

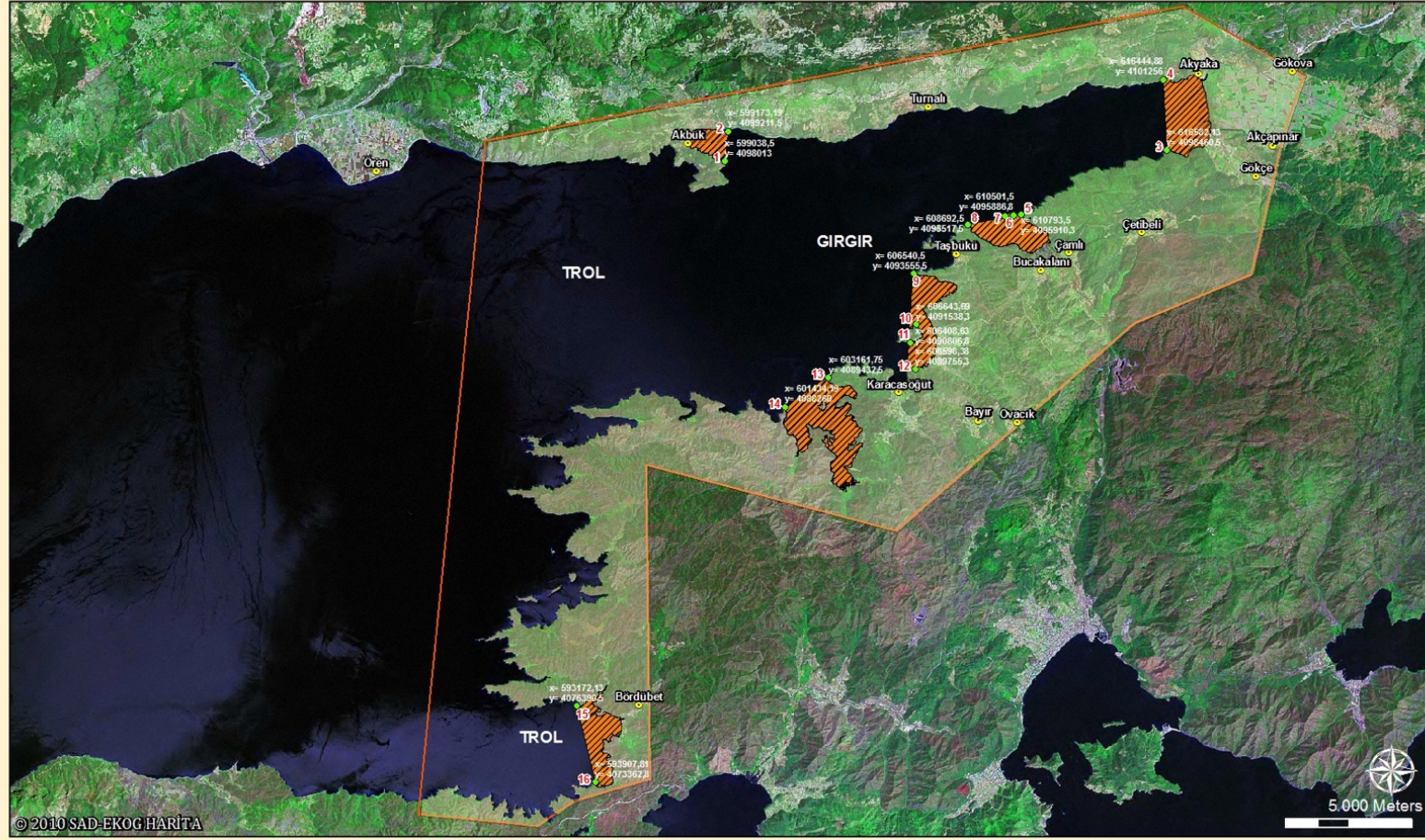
GÖKOVA SEPA INTEGRATED MARINE & COASTAL ZONE MANAGEMENT PLANNING PROJECT











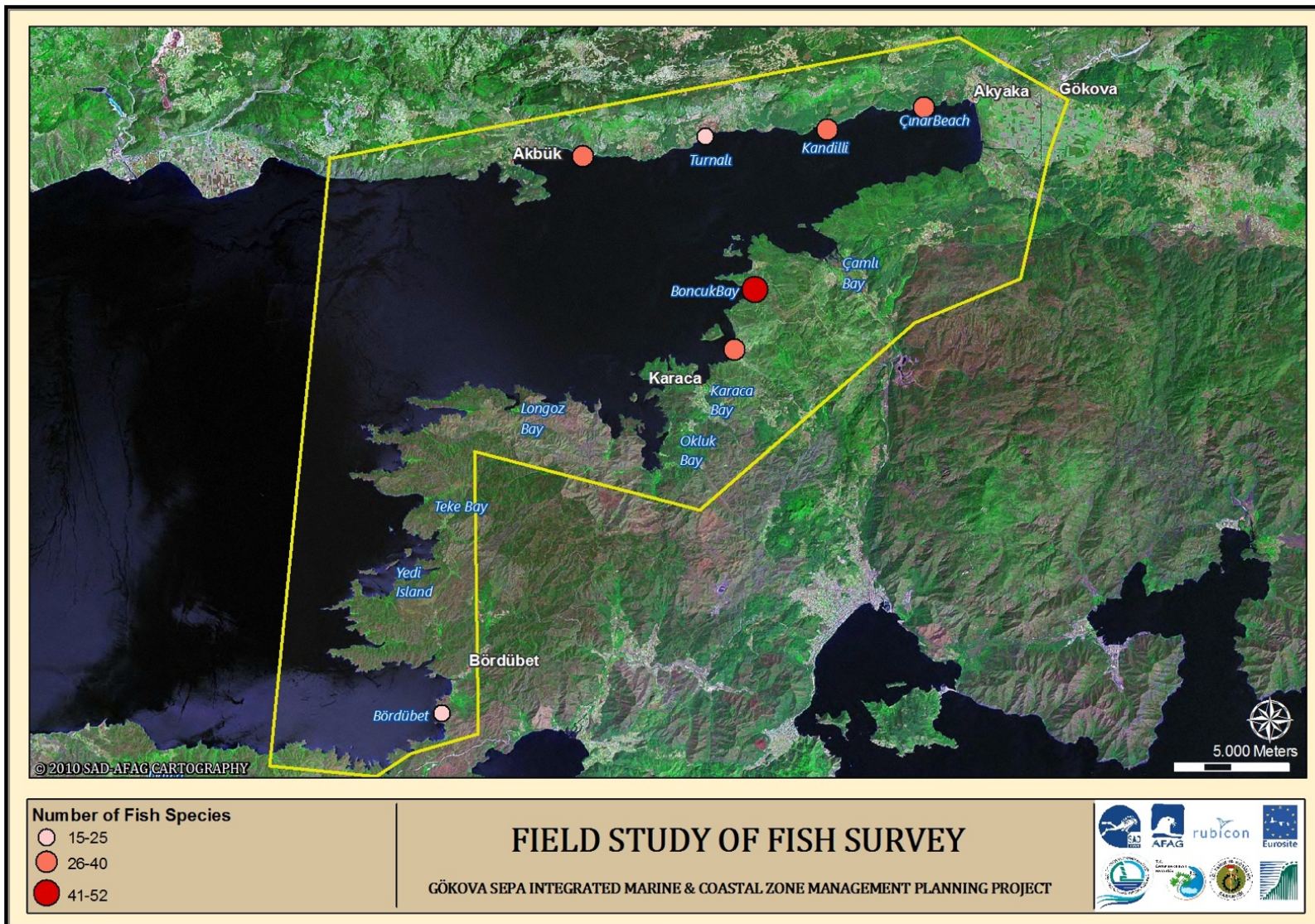


-  Balıkçılığa Kapalı Alanlar
-  Gökova ÖÇKB

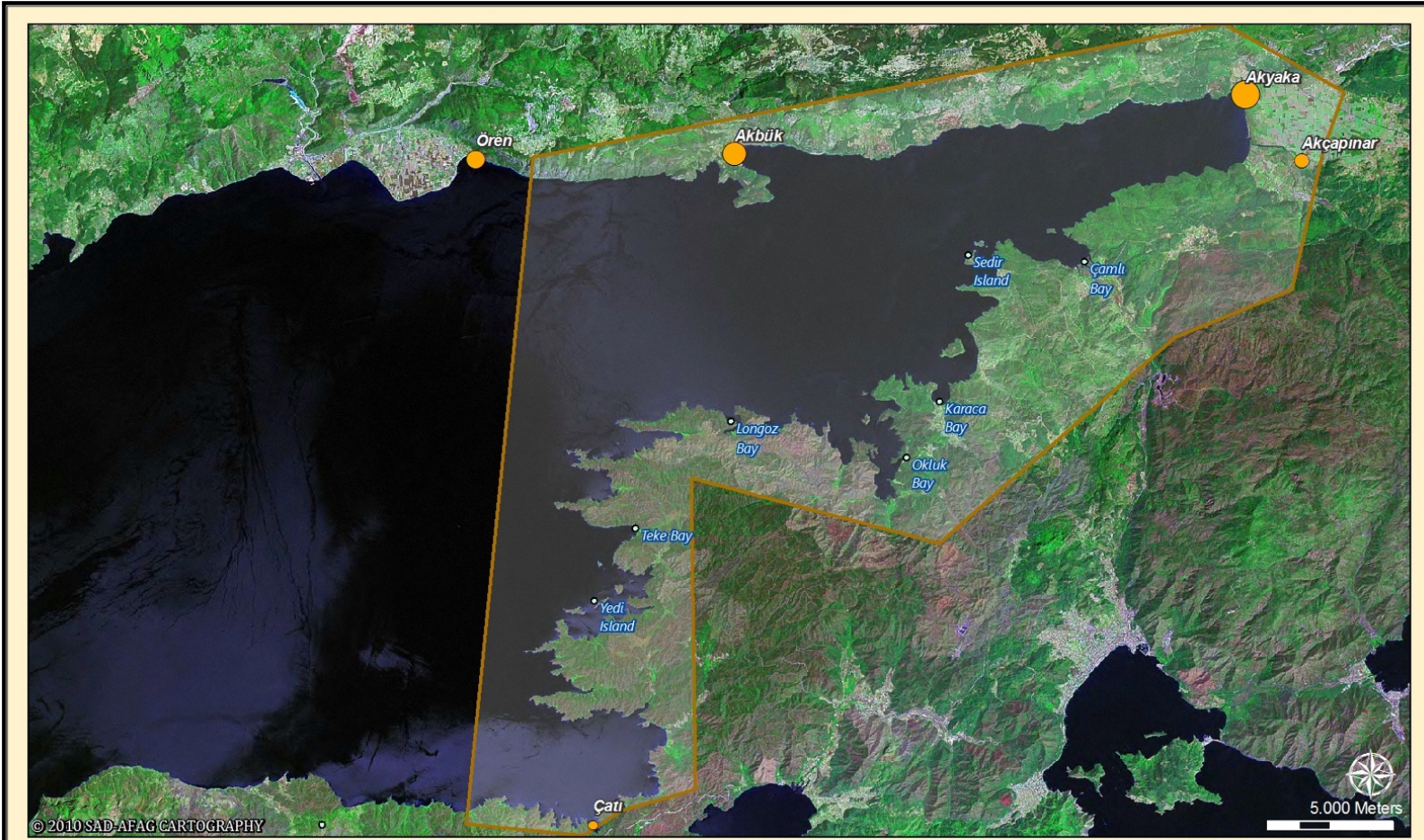
## GÖKOVA KÖRFEZİ BALIKÇILIĞA KAPALI ALANLARI











#### Total engine power (HP)

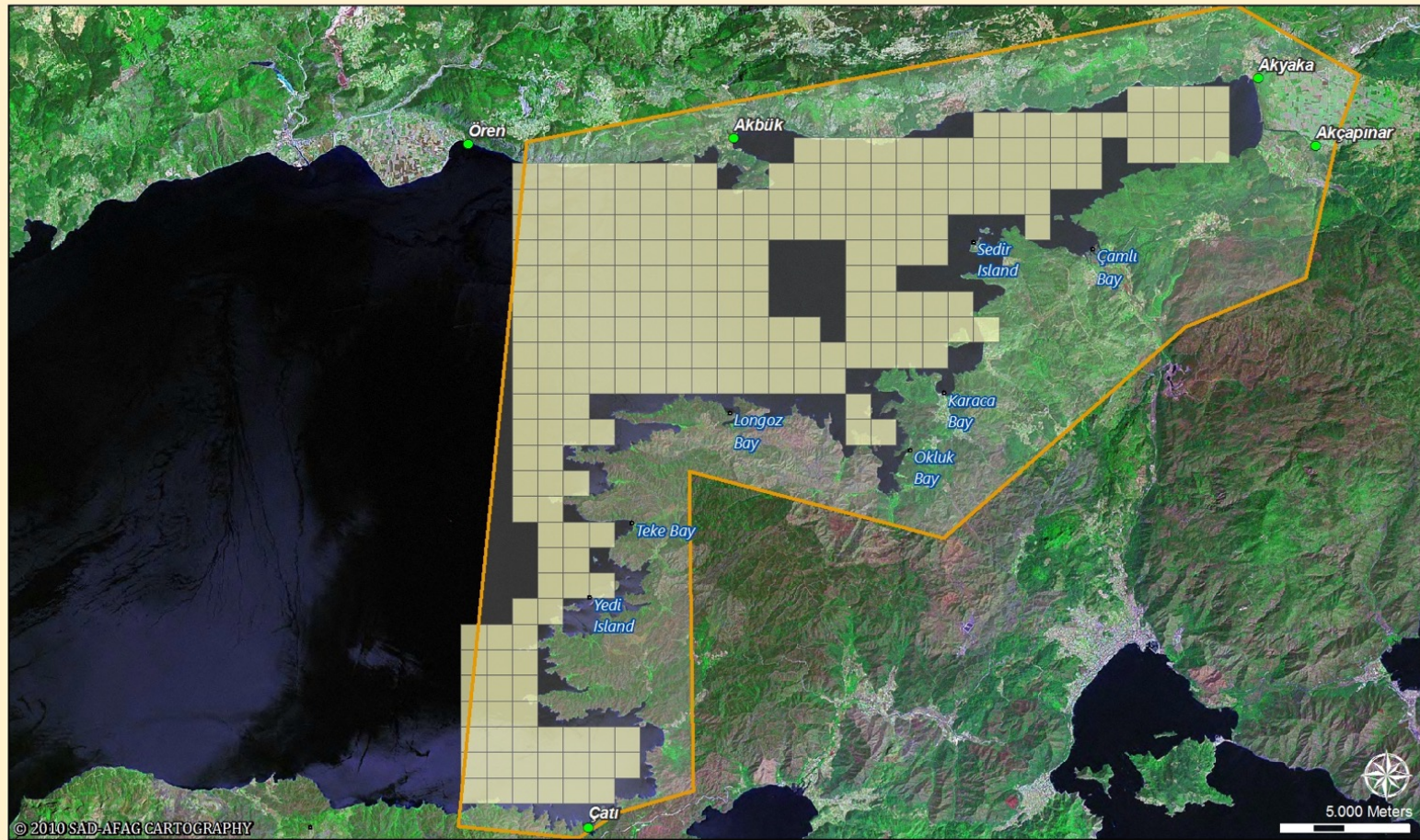
- |                  |                |
|------------------|----------------|
| ○ 307, Çatı      | ○ 572, Akbük   |
| ○ 446, Akçapınar | ○ 1230, Akyaka |
| ○ 505, Ören      |                |

## TOTAL ENGINE POWER

GÖKOVA SEPA INTEGRATED MARINE & COASTAL ZONE MANAGEMENT PLANNING PROJECT







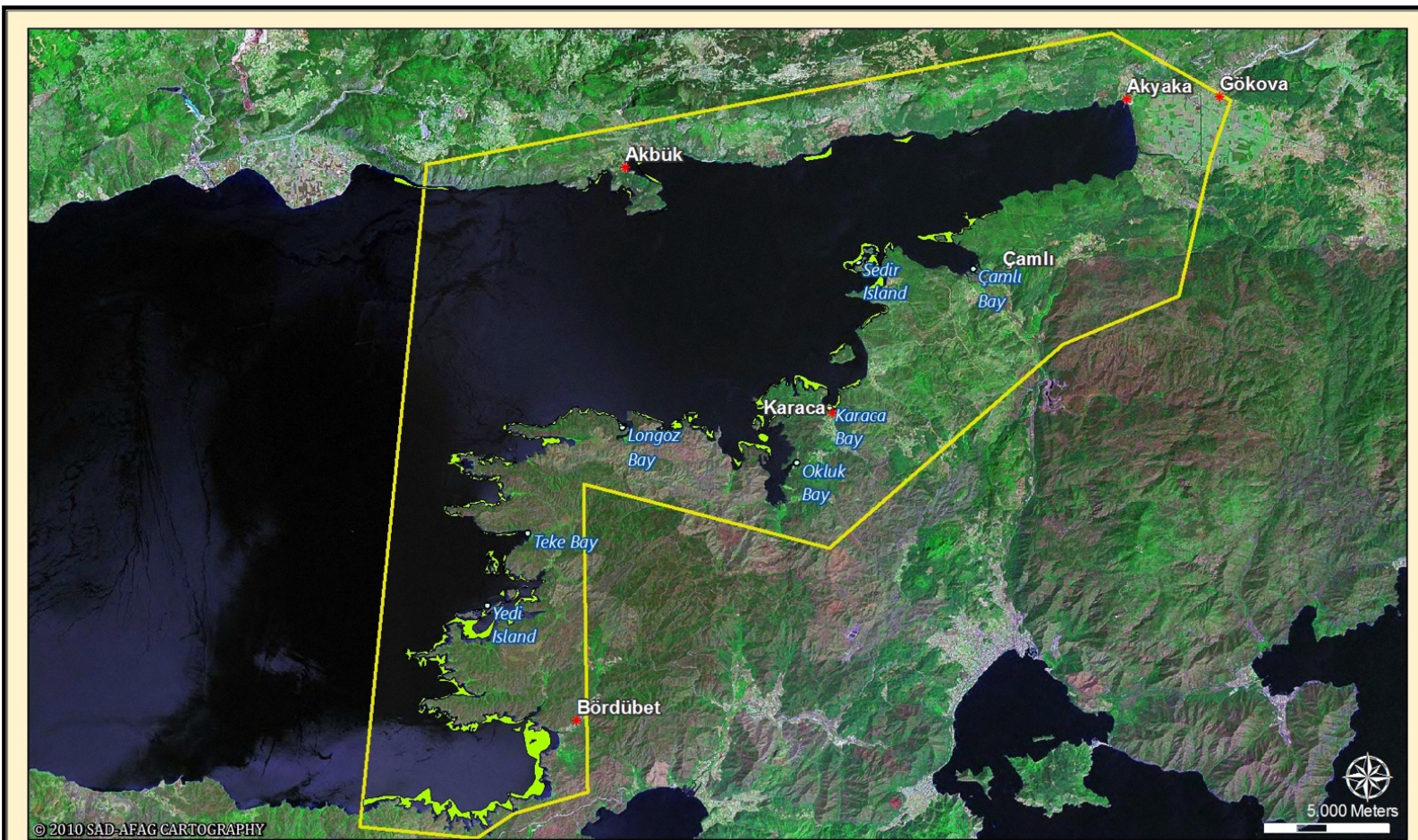
Traditional long line fishing area

## TRADITIONAL LONGLINE FISHING AREA

GÖKOVA SEPA INTEGRATED MARINE & COASTAL ZONE MANAGEMENT PLANNING PROJECT







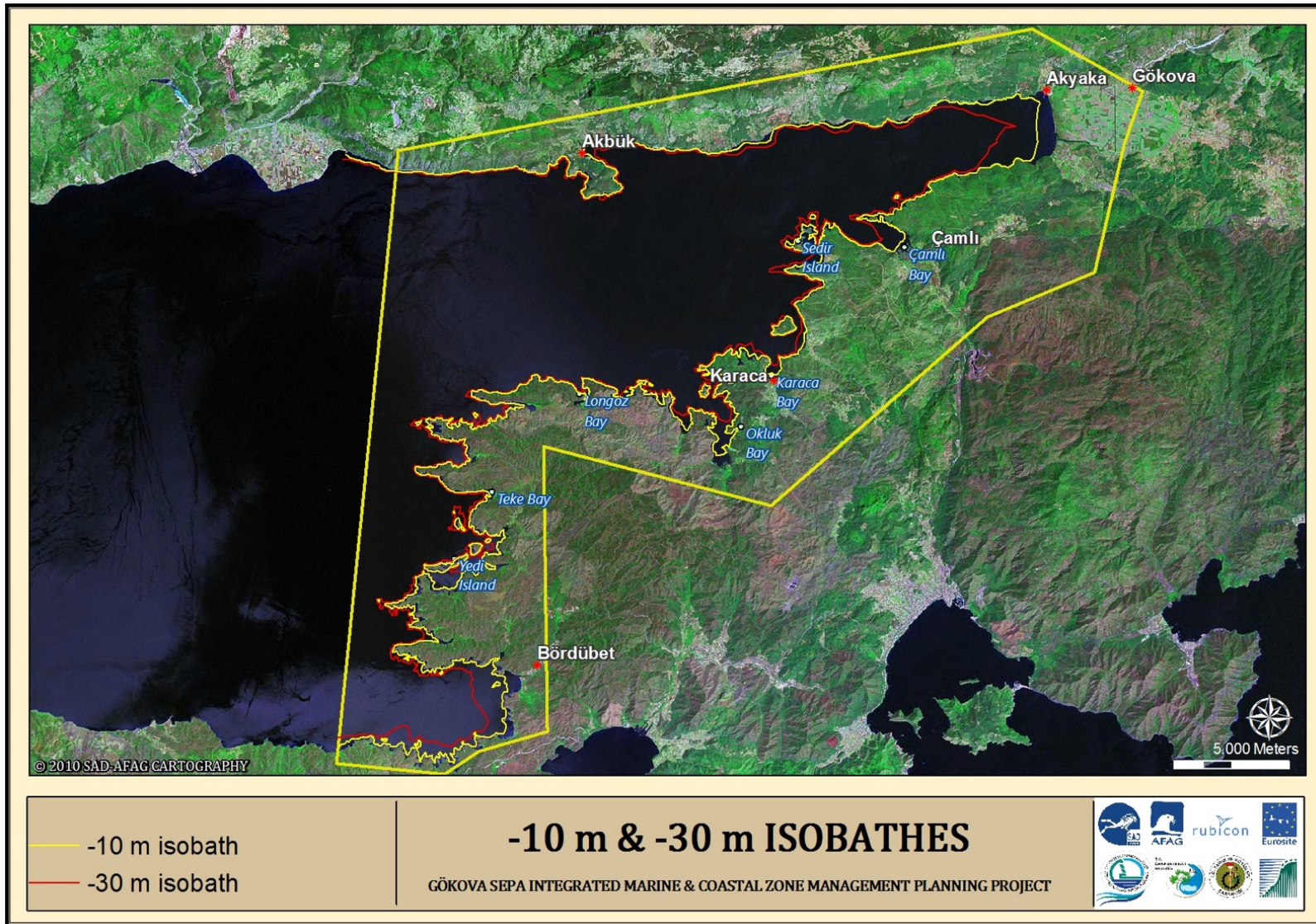
See grass (*Posidonia oceanica*) beds

## SEA GRASS DISTRIBUTION

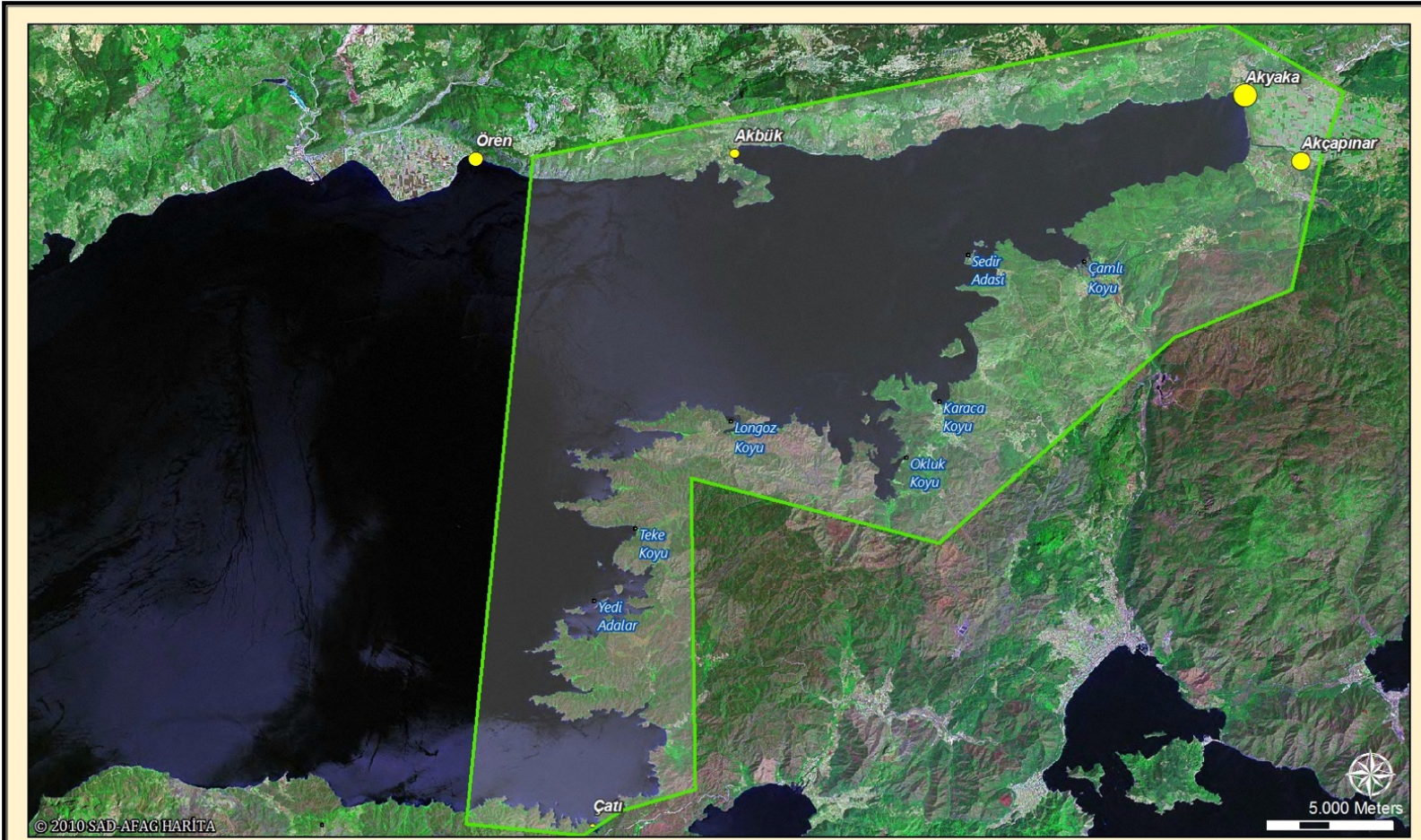
GÖKOVA SEPA INTEGRATED MARINE & COASTAL ZONE MANAGEMENT PLANNING PROJECT











#### Tekne Boyu (m)

- 89,7, Çatı
- 104,2, Akbük
- 125,02, Ören
- 172,42, Akçapınar
- 334,8, Akyaka

## TEKNE BOYU

GÖKOVA ÖKÇB BÜTÜNLEŞİK KİYI VE DENİZ ALANLARI YÖNETİM PLANLAMASI PROJESİ







#### Total Fishing Boat Lenght (m)

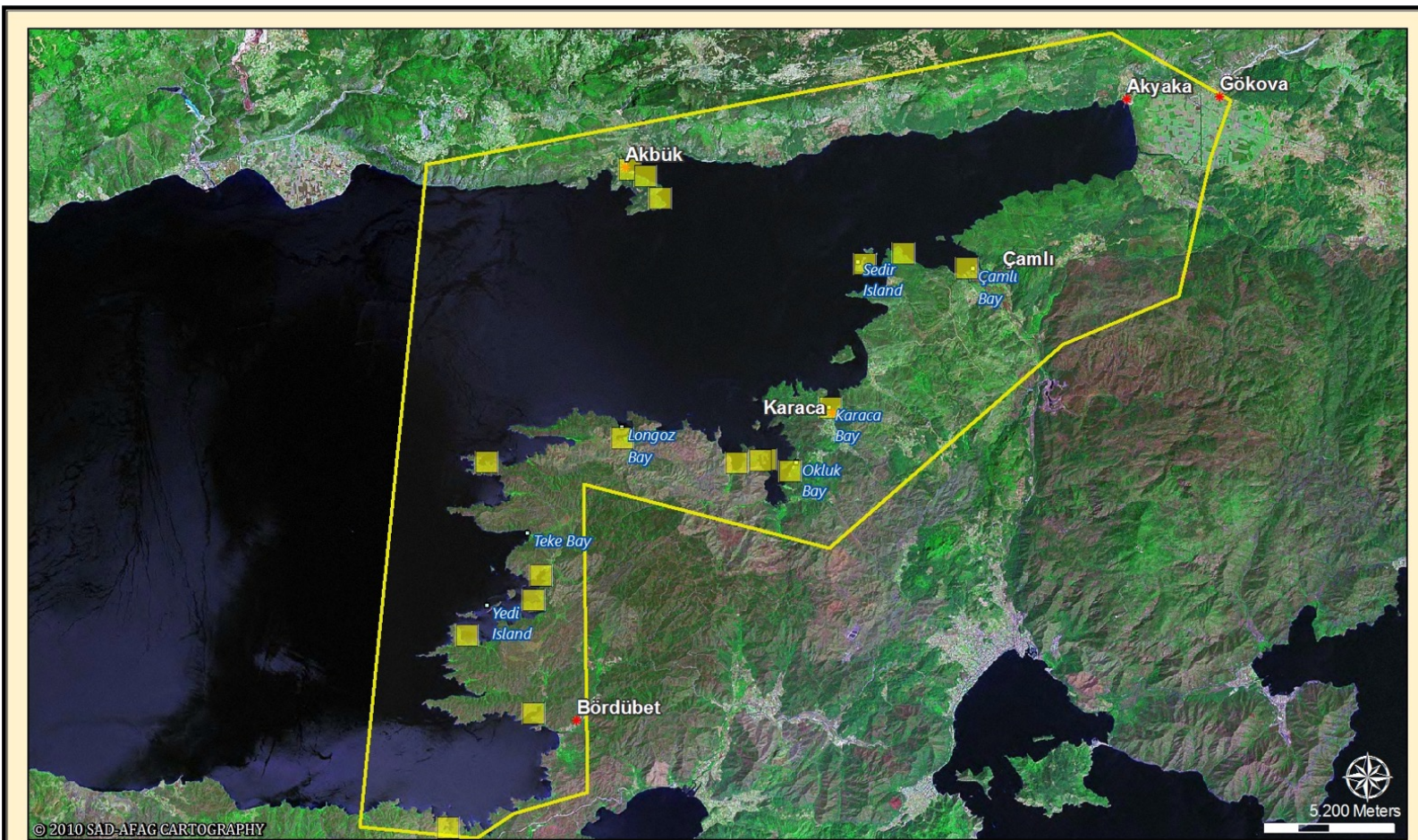
- 89,7, Çatı      ● 172,42, Akçapınar
- 104,2, Akbük      ● 334,8, Akyaka
- 125,02, Ören

## TOTAL FISHING BOAT LENGHT

GÖKOVA SEPA INTEGRATED MARINE & COASTAL ZONE MANAGEMENT PLANNING PROJECT







■ Mooring Areas for Yachtes

## MOORING AREAS FOR YACHTES

GÖKOVA SEPA INTEGRATED MARINE & COASTAL ZONE MANAGEMENT PLANNING PROJECT





